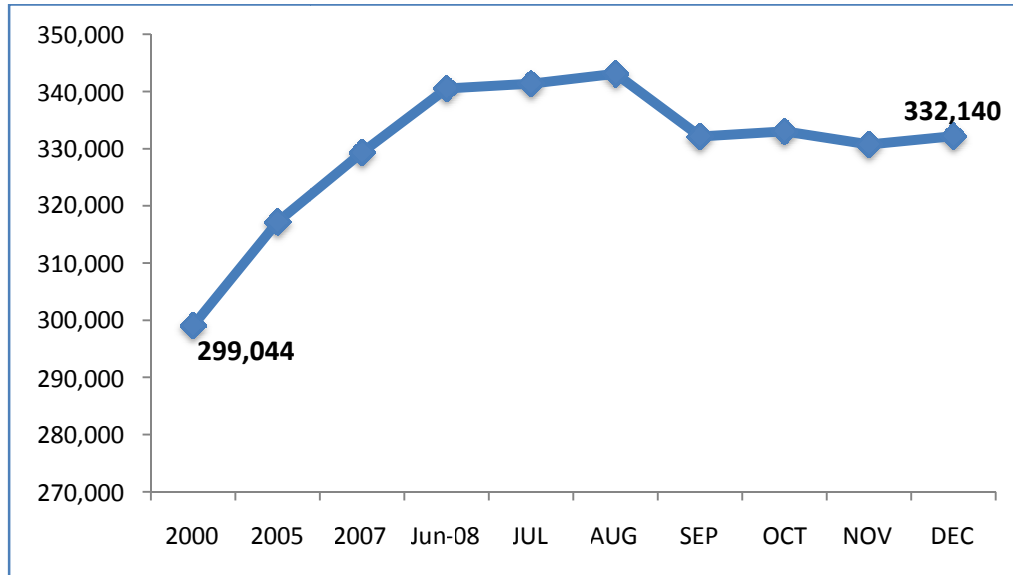


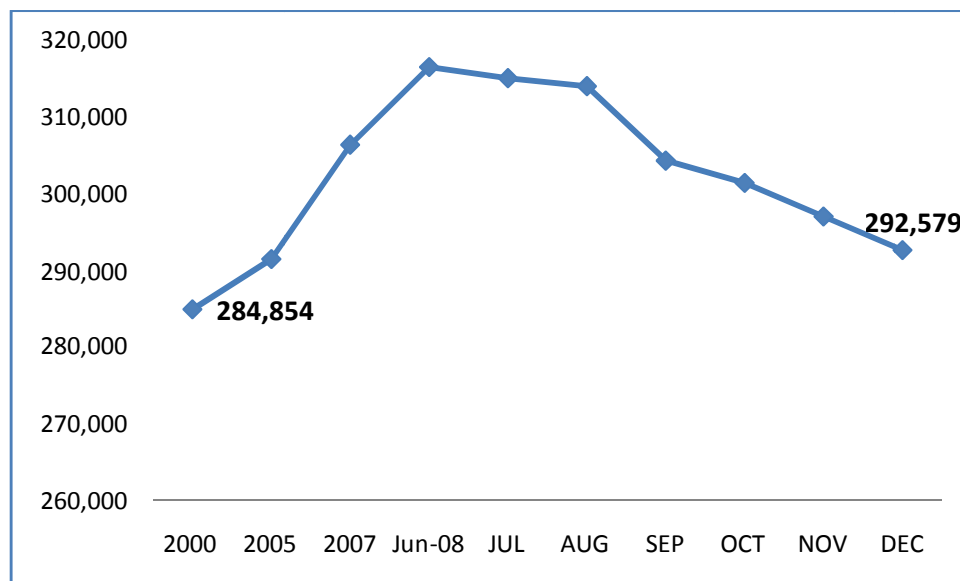
### NESA Region Labor Force



Source: South Carolina Employment Security Commission

The labor force in the NESA Region continues to grow at a rapid pace. Over the past eight years, the labor force of the region has increased by 33,096 people. From current population trends, we expect the labor force to increase at an even greater rate during the next decade.

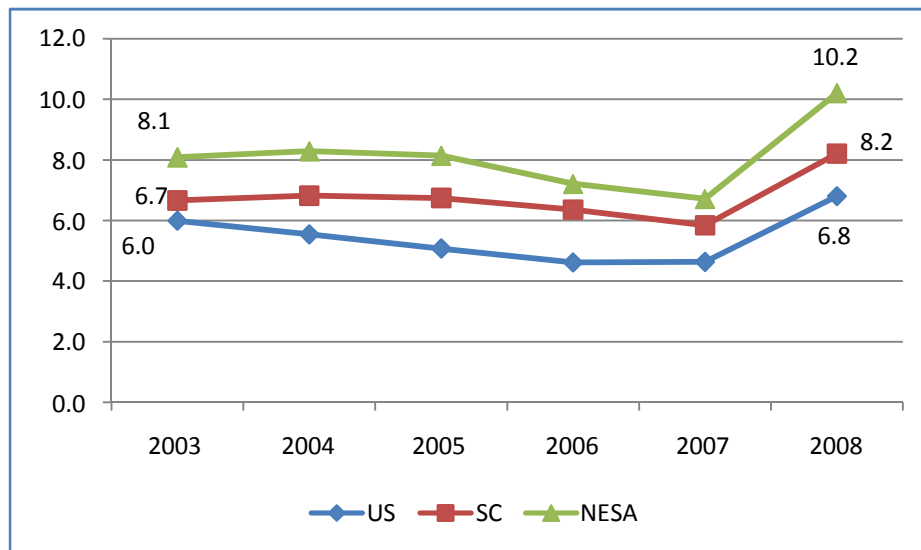
### NESA Region Employment Growth



Source: South Carolina Employment Security Commission

While employment in the region has grown from 2000 to present, it has not done so in such a way that has kept pace with the growth in our labor force. The NESAs Region needs new jobs and capital investment to support our burgeoning available workforce.

### Unemployment Rate Comparison



Source: Dr. Johnathan Munn, Francis Marion University

The NESAs Region’s unemployment rate is historically higher than that found in the state and the nation. Over the past several years, the region has been working to bridge the gap between the region and the state. Up until the recent economic downturn, the gap was shrinking. The recession has had a greater impact on the NESAs Region than on the State of South Carolina as a whole. As of December 2008, there were 39,561 unemployed people in the NESAs Region.

In addition to the unemployed labor pool, there are an additional 16,200 people who are considered “under-employed” according to a labor study conducted by the Pathfinders. Of these, 64% are experienced in manufacturing/assembly operations and 56% are experienced in warehouse/distribution operations. The median desired pay rate for underemployed persons to change jobs is reported as \$12.29 for warehouse/material handling and \$12.33 for manufacturing/assembly. For back office related projects, the report shows 63% have office operations experience and 58% are experienced in sales and customer service.

	<b>Mean Travel Time in Min.</b>
Chesterfield	25.2
Darlington	22.0
Dillon	21.6
Florence	21.9
Georgetown	24.2
Horry	20.5
Marion	23.8
Marlboro	21.6
Williamsburg	27.8
<b>NESA Region</b>	<b>23.2</b>
South Carolina	23.3
United States	25.1

Source: US Census Bureau, 2005-2007